

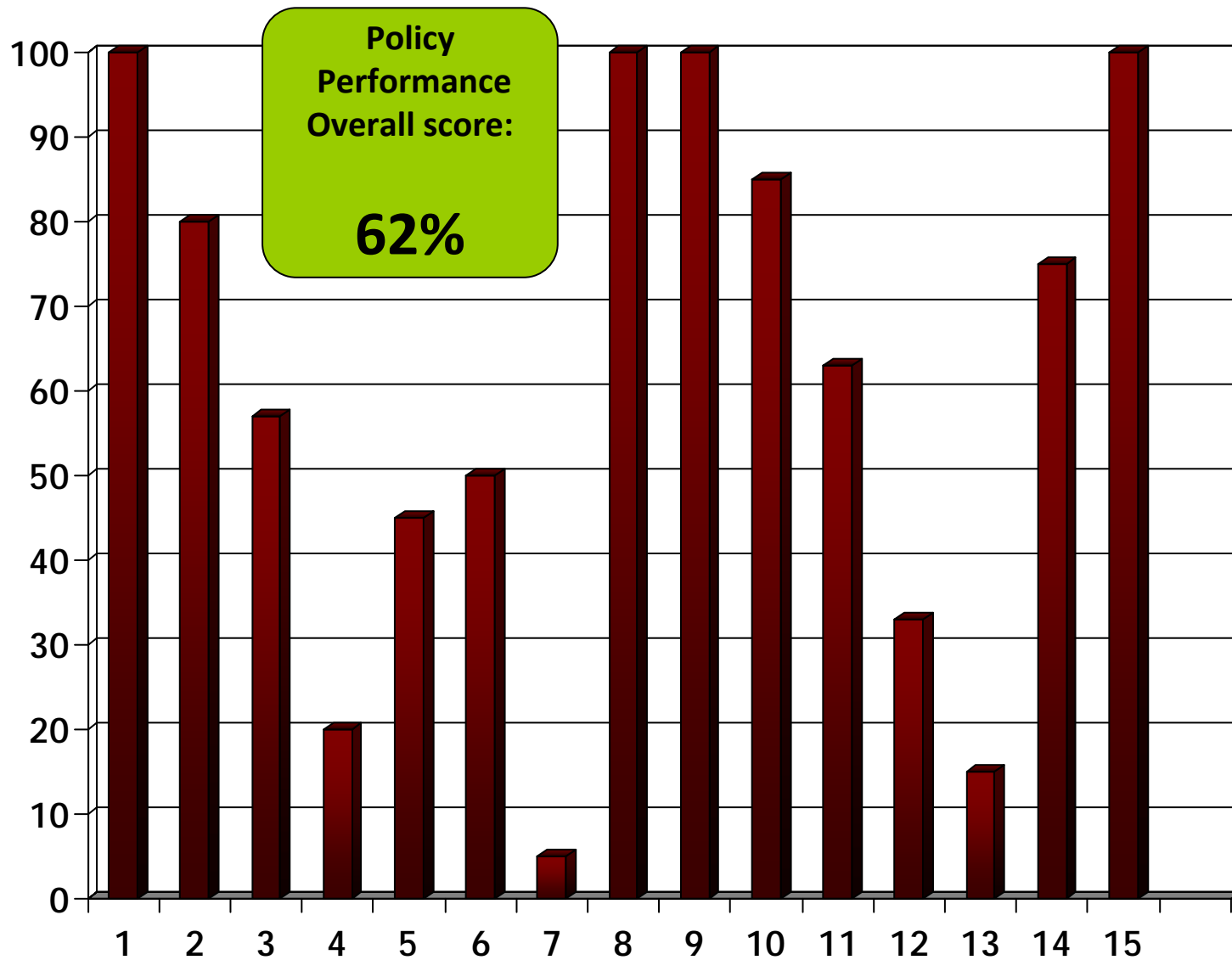
Case Study 1:
Determining
Environmental
Policy Performance



- Organisations with a commitment to managing/mitigating their environmental risks:
 - Communicate their statements of intent, to their stakeholders, by formulating an environmental policy.
- In ISO 14001/EMAS an environmental policy is a mandatory requirement.

- Questions that organisations need to ask themselves include:
 - Do we know how well our policy actually performs?
 - Do we have a quantifiable measure as how well your performance is doing?
 - Where should we concentrate our efforts?

- ESP has developed a methodology for analysing policy performance.
 - Divides the policy into statements of intent
 - Scores the statement of intent based upon knowledge of the organisation
 - Provides individual scoring on the statement of intent
 - Provides an overall performance score
 - Provides recommendations where efforts should be concentrated



- Concentrating efforts in defined areas
- Reviewing a Policy in a less subjective way
- To identify if, and how much, a policy needs revising
- Comparing two revisions of a policy to quantify improvement
- To ensure the continual improvement of a policy an EMS.

For more information contact:

ESP Ltd

The Creative Industries Centre

Wolverhampton Science Park

Wolverhampton

WV10 9TG

01902 771311

www.esp.uk.net